

Precision levelling wedges

Due to their large contact area Bilz precision levelling wedges (PK) for vibration and structure-borne noise insulation offer optimum support and stiffening of the machine bed. They are available in a wide range of sizes and dimensions as free-standing, bolt-on to the machine or bolt-through to the foundation design.



The proven design principle enables the machine to be quickly levelled to a degree of levelling in the 1/100 mm range even at loads of 100 tons per wedge.
The powerful self-locking effect of the levelling bolt prevents self-adjustment under the effects of vibration. Depending on the application, their use in conjunction with Bilz insulation pads creates the perfect strength coherence and very effective vibration insulation.

General information

- On request we supply special solutions in terms of coating, insulation pad mounting and dimension..
- Permissible temperature range: -20 °C to +120 °C
- To simplify handling the upper or lower wedge can be secured with a tension spring.
- The general tolerances in accordance with ISO 2768 vL apply to the specified lengths and widths. The specified height at the centre position is subject to a tolerance of ± 1 mm.



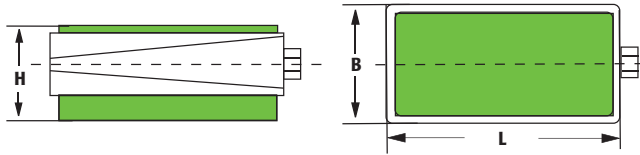
THE WIDTH ACROSS FLATS FOR BILZ PRECISION LEVELLING WEDGES

Type	Inner	Outer	PK 8	SW 19	SW 41
PK 1	SW 6	SW 13	PK 9	SW 22	SW 50
PK 2	SW 10	SW 19			
PK 2.5	SW 10	SW 19	Type	Inner	Outer
PK 3	SW 12	SW 22	PKA/PKD 1	SW 10	SW 19
PK 3.2	SW 12	SW 22	PKA/PKD 2	SW 12	SW 22
PK 3.5	SW 12	SW 22	PKA/PKD 3	SW 14	SW 27
PK 3.8	SW 12	SW 22	PKA/PKD 4	SW 14	SW 27
PK 4	SW 14	SW 27	PKA/PKD 5	SW 14	SW 27
PK 4.5	SW 14	SW 27	PKA/PKD 6	SW 17	SW 32
PK 5	SW 14	SW 27	PKA/PKD 7	SW 19	SW 41
PK 5.5	SW 14	SW 27	PKA/PKD 8	SW 22	SW 50
PK 6	SW 14	SW 27			
PK 7	SW 17	SW 32			

Precision levelling wedge **PK** Free-standing

Specifically for machines without mounting holes in the machine bed

Colour: RAL 7037, dusty grey



Note

- The specified maximum load is composed of static and dynamic loading of the machine. The best insulation effect is achieved at approximately 80-90 % of the specified maximum load.
- Details on the properties of the insulation pads used can be found on pages 14-17.
- Please contact us if the size or insulation pad mounting that you are looking for is not listed. In addition to our standard solutions and colours we also carry numerous special solutions. We are always happy to give advice.

A-MOUNTING



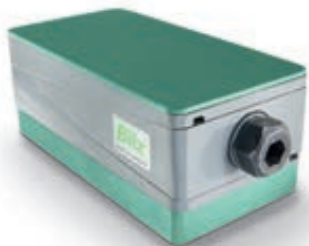
Universal application for machine tools and injection moulding machines. Very good insulation effect. Specifically for machines subject to high horizontal forces. Very high anti-slip effect!

TOP FACE:
Anti-slip pad
BR7-1

BOTTOM FACE:
Insulation pad B4-1

Type	Item no. PK	max. load N/pc.	L mm	B mm	H mm	Adjustment range
						Centre position mm
PK 1-A	02-0004	5,400	105	55	59	+4/-5
PK 2-A	02-0011	10,000	150	75	63	+5/-6
PK 2.5-A	02-0104	12,000	115	115	67	+4/-5
PK 3-A	02-0025	18,000	200	95	67	+5/-5
PK 3/72-A	02-0019	18,000	200	95	94	+5/-4
PK 3.2-A	02-0110	20,000	150	150	68	+5/-6
PK 3.5-A	02-0116	26,000	115	250	92	+4/-8
PK 3.8-A	02-0122	26,000	170	170	76	+6/-8
PK 4-A	02-0042	38,000	200	200	70	+5/-7
PK 4/72-A	02-0033	38,000	200	200	94	+5/-7
PK 4.5-A	02-0128	39,000	180	230	84	+9/-9
PK 5-A	02-0050	48,000	200	250	94	+10/-7
PK 5.5-A	02-0134	73,000	300	250	106	+10/-8
PK 6-A	02-0057	80,000	250	330	94	+7/-10
PK 7-A	02-0064	117,500	300	400	95	+8/-12
PK 8-A	02-0071	195,500	400	500	95	+8/-14
PK 9-A	02-0078	294,500	500	600	137	+12/-15

B-MOUNTING



Special design for CNC lathes, grinding machines, drilling and cutting mills, cutting centres, transfer lines.

TOP FACE:
Anti-slip pad BS

BOTTOM FACE:
Insulation pad B0

Type	Item no. PK	max. load N/pc.	L mm	B mm	H mm	Adjustment range
						Centre position mm
PK 1-B	02-0005	10,000	105	55	54	+4/-5
PK 2-B	02-0012	21,000	150	75	58	+5/-6
PK 2.5-B	02-0105	25,000	115	115	62	+4/-5
PK 3-B	02-0026	36,000	200	95	62	+5/-5
PK 3/72-B	02-0020	36,000	200	95	89	+5/-4
PK 3.2-B	02-0111	43,000	150	150	63	+5/-6
PK 3.5-B	02-0117	55,000	115	250	87	+4/-8
PK 3.8-B	02-0123	55,000	170	170	71	+6/-8
PK 4-B	02-0043	77,000	200	200	65	+5/-7
PK 4/72-B	02-0034	77,000	200	200	89	+5/-7
PK4.5-B	02-0129	79,500	180	230	79	+9/-9
PK 5-B	02-0051	97,000	200	250	89	+10/-7
PK 5.5-B	02-0135	144,000	300	250	101	+10/-8
PK 6-B	02-0058	161,000	250	330	89	+7/-10
PK 7-B	02-0065	236,000	300	400	90	+8/-12
PK 8-B	02-0072	393,000	400	500	90	+8/-14
PK 9-B	02-0079	591,000	500	600	132	+12/-15

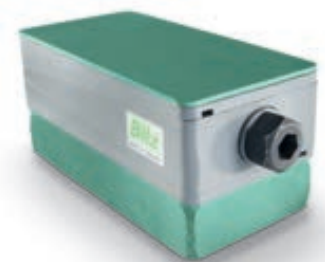


C-MOUNTING

Type	Item no. PK	max. load N/pc.	L mm	B mm	H mm	Adjustment range
						Centre position mm
PK 1-C	02-0006	4,600	105	55	64	+4/-5
PK 2-C	02-0013	8,700	150	75	68	+5/-6
PK 2.5-C	02-0106	10,000	115	115	72	+4/-5
PK 3-C	02-0027	14,600	200	95	72	+5/-5
PK 3/72-C	02-0021	14,600	200	95	99	+5/-4
PK 3.2-C	02-0112	17,000	150	150	73	+5/-6
PK 3.5-C	02-0118	22,000	115	250	97	+4/-8
PK 3.8-C	02-0124	22,000	170	170	81	+6/-8
PK 4-C	02-0044	31,000	200	200	75	+5/-7
PK 4/72-C	02-0035	31,000	200	200	99	+5/-7
PK 4.5-C	02-0133	32,000	180	230	89	+9/-9
PK 5-C	02-0052	38,900	200	250	99	+10/-7
PK 5.5-C	02-0136	58,000	300	250	111	+10/-8
PK 6-C	02-0059	64,500	250	330	99	+7/-10
PK 7-C	02-0066	94,500	300	400	100	+8/-12
PK 8-C	02-0073	157,000	400	500	100	+8/-14
PK 9-C	02-0080	236,000	500	600	142	+12/-15

Highly effective vibration insulation. Especially for installation on upper floors.
Please contact us in cases of sensitive applications.

TOP FACE:
Anti-slip pad BS
BOTTOM FACE:
Insulation pad B32

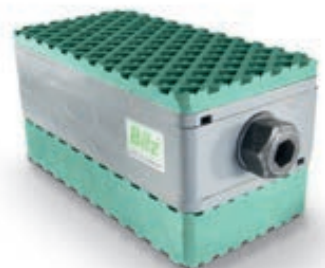


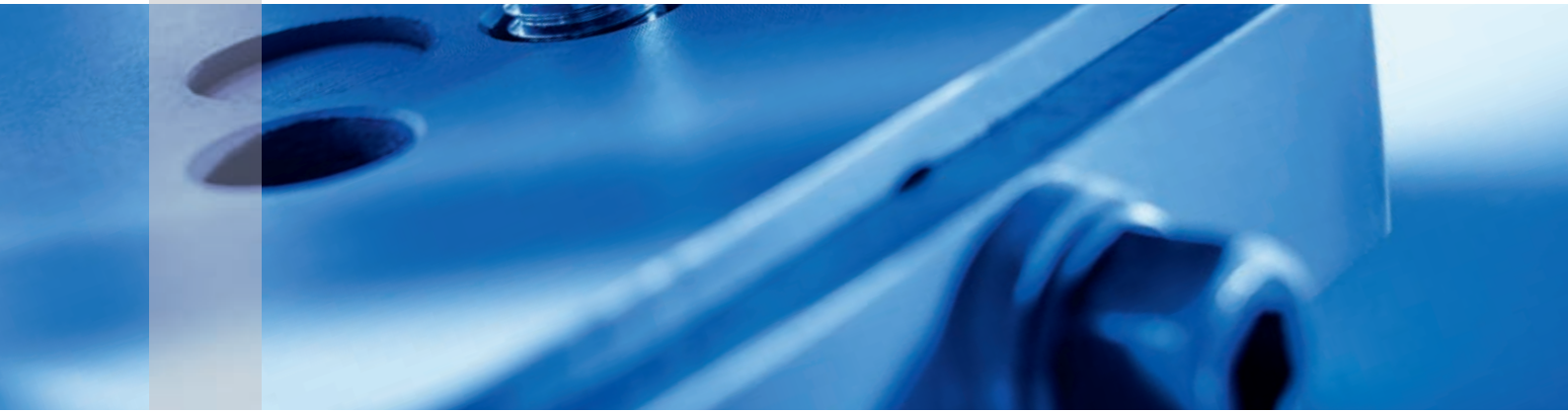
D-MOUNTING

Type	Item no. PK	max. load N/pc.	L mm	B mm	H mm	Adjustment range
						Centre position mm
PK 1-D	02-0007	8,700	105	55	69	+4/-5
PK 2-D	02-0014	17,000	150	75	73	+5/-6
PK 2.5-D	02-0107	20,000	115	115	77	+4/-5
PK 3-D	02-0028	29,000	200	95	77	+5/-5
PK 3/72-D	02-0022	29,000	200	95	104	+5/-4
PK 3.2-D	02-0113	34,500	150	150	78	+5/-6
PK 3.5-D	02-0119	44,500	115	250	102	+4/-8
PK 3.8-D	02-0125	44,500	170	170	86	+6/-8
PK 4-D	02-0045	62,000	200	200	80	+5/-7
PK 4/72-D	02-0036	62,000	200	200	104	+5/-7
PK 4.5-D	02-0130	64,000	180	230	94	+9/-9
PK 5-D	02-0053	77,000	200	250	104	+10/-7
PK 5.5-D	02-0137	116,000	300	250	116	+10/-8
PK 6-D	02-0060	129,000	250	330	104	+7/-10
PK 7-D	02-0067	189,000	300	400	105	+8/-12
PK 8-D	02-0074	314,000	400	500	105	+8/-14
PK 9-D	02-0081	470,000	500	600	147	+12/-15

For machines with high dynamic forces such as presses, punches, shears.

TOP FACE:
Anti-slip pad
BR7-1
BOTTOM FACE:
Insulation pad B5





E-MOUNTING

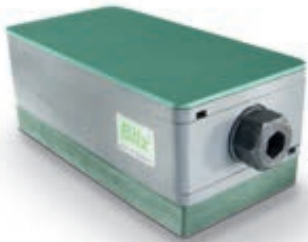


Machines and systems that require no vibration insulation. Good frictional engagement due to equipping with anti-slip plates. Very low overall height.

TOP FACE:
Anti-slip pad BS
BOTTOM FACE:
Anti-slip pad BS

Type	Item no. PK	max. load N/pc.	L mm	B mm	H mm	Adjustment range
						Centre position mm
PK 1-E	02-0008	16,000	105	55	41	+4/-5
PK 2-E	02-0015	32,500	150	75	45	+5/-6
PK 2.5-E	02-0108	38,000	115	115	49	+4/-5
PK 3-E	02-0029	54,900	200	95	49	+5/-5
PK 3/72-E	02-0023	54,900	200	95	76	+5/-4
PK 3.2-E	02-0114	65,000	150	150	50	+5/-6
PK 3.5-E	02-0120	83,500	115	250	74	+4/-8
PK 3.8-E	02-0126	83,500	170	170	58	+6/-8
PK 4-E	02-0046	116,400	200	200	52	+5/-7
PK 4/72-E	02-0037	116,400	200	200	76	+5/-7
PK 4.5-E	02-0131	120,000	180	230	66	+9/-9
PK 5-E	02-0054	145,500	200	250	76	+10/-7
PK 5.5-E	02-0138	218,000	300	250	88	+10/-8
PK 6-E	02-0061	242,000	250	330	76	+7/-10
PK 7-E	02-0068	355,000	300	400	77	+8/-12
PK 8-E	02-0075	589,500	400	500	77	+8/-14
PK 9-E	02-0082	887,000	500	600	119	+12/-15

F-MOUNTING



For extremely high loads. Very good level consistency.

TOP FACE:
Anti-slip pad BS
BOTTOM FACE:
Insulation pad B6

Type	Item no. PK	max. load N/pc.	L mm	B mm	H mm	Adjustment range
						Centre position mm
PK 1-F	02-0009	19,000	105	55	54	+4/-5
PK 2-F	02-0016	38,000	150	75	58	+5/-6
PK 2.5-F	02-0109	44,500	115	115	62	+4/-5
PK 3-F	02-0030	64,000	200	95	62	+5/-5
PK 3/72-F	02-0024	64,000	200	95	89	+5/-4
PK 3.2-F	02-0115	75,800	150	150	63	+5/-6
PK 3.5-F	02-0121	97,000	115	250	87	+4/-8
PK 3.8-F	02-0127	97,000	170	170	71	+6/-8
PK 4-F	02-0047	135,000	200	200	65	+5/-7
PK 4/72-F	02-0039	135,000	200	200	89	+5/-7
PK 4.5-F	02-0132	139,500	180	230	79	+9/-9
PK 5-F	02-0055	170,000	200	250	89	+10/-7
PK 5.5-F	02-0139	253,000	300	250	101	+10/-8
PK 6-F	02-0062	282,000	250	330	89	+7/-10
PK 7-F	02-0069	414,000	300	400	90	+8/-12
PK 8-F	02-0076	680,000	400	500	90	+8/-14
PK 9-F	02-0083	1,035,000	500	600	132	+12/-15

Precision levelling wedge series **PKA**

Bolt-on Bilz precision levelling wedges PKA are used on machines subject to high thrust that require a permanent connection to the machine bed, such as injection moulding machines, slotting machines, extrusion machines etc.

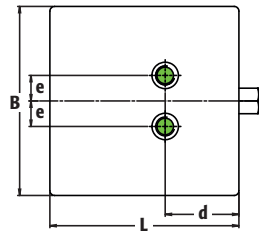
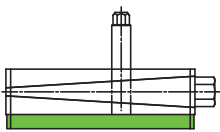
The bolt-on levelling wedges remain in position even when the machine is lifted, significantly easing the installation of the machine.

Bolts: Suitable bolts and nuts with standard thread can be supplied on request, see table 1, p. 37.

Colour: RAL 7037, dusty grey

Note

- The type of Insulation pads used can be found in the type designation, for example PKA 3-0 is equipped with pad B0, PKA 3-4 with B4.
- The specified maximum load is composed of static and dynamic loading of the machine. The best insulation effect is achieved at approximately 80-90 % of the specified maximum load.
- Details on the properties of the insulation pads used can be found on pages 14-17.
- Please contact us if the size, insulation pad mounting or bolt size that you are looking for is not listed. In addition to our standard solutions and colours we also carry numerous special solutions. We are always happy to give advice.

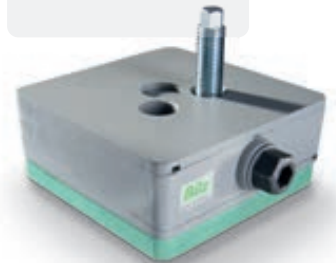


PKA 1-0 to PKA 8-0

Type	Item no. PKA	max. load N/pc.	L mm	B mm	H mm Centre position	d mm	e mm	Internal thread	Adjustment range mm
PKA 1-0	03-0007	25,000	115	115	60	50	24	M16	+3/-3
PKA 2-0	03-0010	43,000	150	150	61	58	23	M18	+4/-4
PKA 3-0	03-0024	77,000	200	200	63	76	27	M20	+4/-6
PKA 3/72-0	03-0020	77,000	200	200	87	76	27	M20	+4/-7
PKA 4-0	03-0028	97,000	200	250	87	95	27	M20	+10/-7
PKA 5-0	03-0033	161,000	250	330	87	125	105	M24	+6/-10
PKA 6-0	03-0037	236,000	300	400	88	150	95	M24	+8/-12
PKA 7-0	03-0040	393,000	400	500	88	200	130	M24	+8/-14
PKA 8-0	03-0043	591,000	500	600	130	255	150	M30x2	+12/-15

Lathes, boring mills, grinding machines and machining centres.

TOP FACE:
Plain surface
BOTTOM FACE:
Insulation pad B0



PKA 1-4 TO PKA 8-4

Type	Item no. PKA	max. load N/pc.	L mm	B mm	H mm Centre position	d mm	e mm	Internal thread	Adjustment range mm
PKA 1-4	03-0008	12,000	115	115	60	50	24	M16	+3/-3
PKA 2-4	03-0011	20,000	150	150	61	58	23	M18	+4/-4
PKA 3-4	03-0025	38,000	200	200	63	76	27	M20	+4/-6
PKA 3/72-4	03-0021	38,000	200	200	87	76	27	M20	+4/-7
PKA 4-4	03-0030	48,000	200	250	87	95	27	M20	+10/-7
PKA 5-4	03-0034	80,000	250	330	87	125	105	M24	+6/-10
PKA 6-4	03-0038	117,500	300	400	88	150	95	M24	+8/-12
PKA 7-4	03-0041	195,500	400	500	88	200	130	M24	+8/-14
PKA 8-4	03-0044	294,500	500	600	130	255	150	M30x2	+12/-15

Plastic injection moulding machines, die casting machines, planing and slotting machines, cold extrusion machines, etc. Extreme slip resistance.

TOP FACE:
Plain surface
BOTTOM FACE:
Insulation pad B4

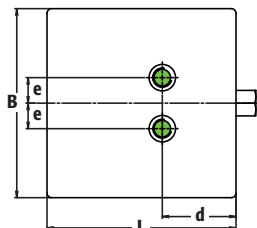
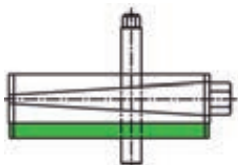


Precision levelling wedge series **PKD**

Bolt-through Bilz precision levelling wedge PKD are used on machines that necessarily need to be anchored due to unfavourable centre of gravity proportions. Also for machines that must be pushed or pulled when levelling – and for machines with low intrinsic rigidity.

Bolts: Suitable bolts and nuts with standard thread and anchor for floor anchoring can be supplied on request, see p. 37/38.

Colour: RAL 7037, dusty grey



Note

- The type of insulation pads used can be found in the type designation, for example PKD 3-0 is equipped with pad B0, PKD 3-4 with B4.
- The specified maximum load is composed of static and dynamic loading of the machine. The best insulation effect is achieved at approximately 80-90 % of the specified maximum load.
- Details on the properties of the insulation pads used can be found on pages 14-17.
- Please contact us if the size, insulation pad mounting or bolt size that you are looking for is not listed. In addition to our standard solutions and colours we also carry numerous special solutions. We are always happy to give advice.
- Supply is inclusive of an appropriate insulating washer to insulate the bolt head.

PKD 1-0 TO PKD 8-0

Boring and cutting mills, machining centres, special machines, long bed lathers, long bed planing machines.

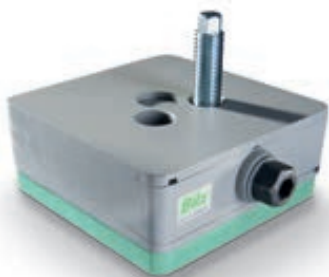
TOP FACE:

Plain surface

BOTTOM FACE:

Insulation pad B0

Type	Item no. PK	max. load N/pc.	L mm	B mm	H mm	Centre position		Drill hole	Adjustment range mm
						d	e		
PKD 1-0	04-0003	25,000	115	115	60	50	24	22	+4/-5
PKD 2-0	04-0005	43,000	150	150	61	58	23	23	+5/-6
PKD 3-0	04-0009	77,000	200	200	63	76	27	26	+3/-7
PKD 3/72-0	04-0007	77,000	200	200	87	76	27	26	+4/-7
PKD 4-0	04-0011	97,000	200	250	87	95	27	26	+10/-7
PKD 5-0	04-0013	161,000	250	330	87	125	105	30	+6/-10
PKD 6-0	04-0015	236,000	300	400	88	150	95	30	+8/-12
PKD 7-0	04-0017	393,000	400	500	88	200	130	35	+8/-14
PKD 8-0	04-0019	591,000	500	600	130	255	150	35	+12/-15

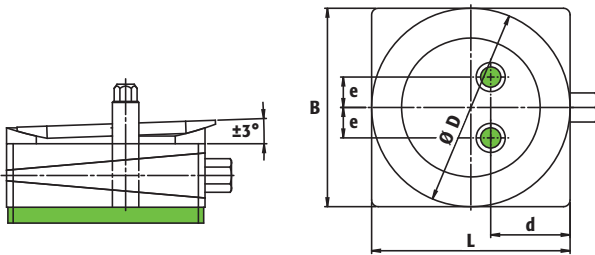


Precision levelling wedge with spherical seat Series **PKAK / PKDK**

Bilz precision levelling wedge PKAK (**bolt-on**)/ PKDK (**bolt-through**) with spherical seat to compensate for angle differences between machines and foundations, e.g. non processed machine mounts or uneven floors. Specifically for machines with a long bed and higher demands on geometry.

Bolts: Suitable bolts and nuts with standard thread and anchor for floor anchoring (only PKDK) can be supplied on request, see p. 37/38.

Colour: RAL 7037, dusty grey



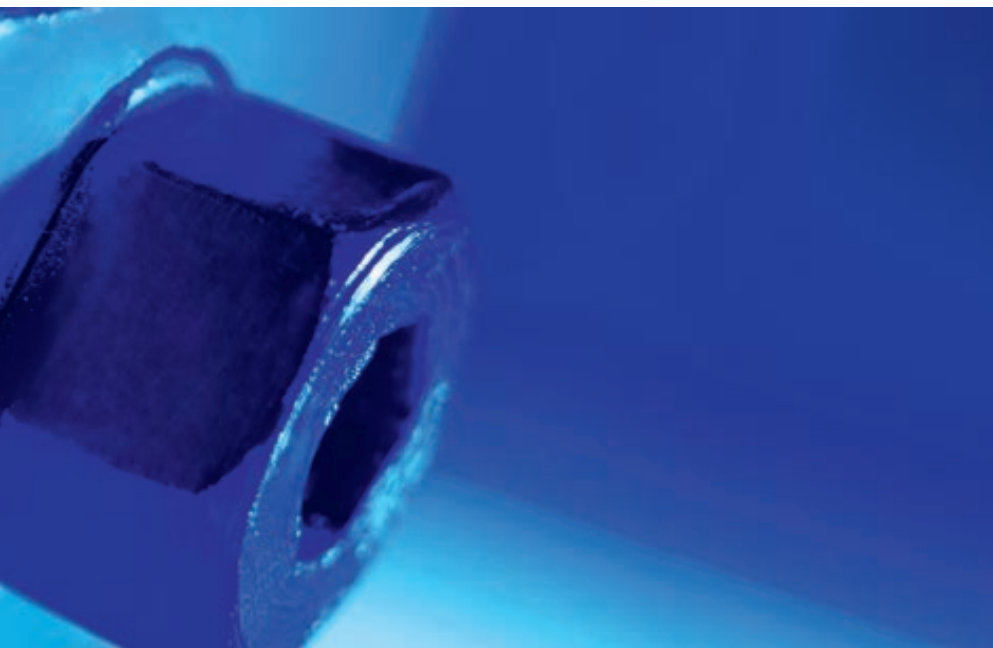
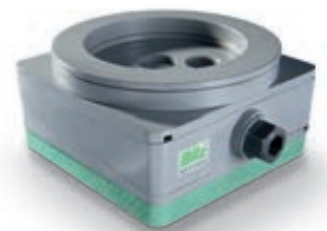
Note

- The type of insulation pads used can be found in the type designation, for example PKDK 3-0 is equipped with B0, PKDK 3-4 with B4.
- The specified maximum load is composed of static and dynamic loading of the machine. The best insulation effect is achieved at approximately 80-90 % of the specified maximum load.
- Details on the properties of the insulation pads used can be found on pages 14-17.
- Please contact us if the size, insulation pad mounting or bolt size that you are looking for is not listed. In addition to our standard solutions and colours we also carry numerous special solutions. We are always happy to give advice.
- For type PKDK supply is inclusive of an appropriate insulating washer to insulate the bolt head.

PKAK / PKDK 1-0 TO PKAK / PKDK 4-0 WITH SPHERICAL SEAT

Type	Item no. PK	max. load N/pc.	L mm	B mm	H mm	ØD mm	d mm	e mm	Internal thread	Adjustment range mm
PKAK 1-0	05-0003	25,000	115	115	70	110	50	24	M16	+3/-3
PKAK 2-0	05-0008	43,000	150	150	77	150	58	23	M18	+4/-4
PKAK 3-0	05-0011	77,000	200	200	79	150	76	27	M20	+4/-6
PKAK 4-0	05-0015	97,000	200	250	103	150	95	27	M20	+10/-7
									Drill hole mm	
PKDK 1-0	06-0003	25,000	115	115	70	110	50	24	22	+4/-5
PKDK 2-0	06-0006	43,000	150	150	77	150	58	23	23	+5/-6
PKDK 3-0	06-0008	77,000	200	200	79	150	76	26	26	+3/-7
PKDK 4-0	06-0010	97,000	200	250	103	150	95	27	26	+10/-7

TOP FACE SPHERICAL SEAT: Painted
BOTTOM FACE: Insulation pad B0



Precision levelling wedge PKA(K)-AL / PKD(K)-AL

Aluminium designs of the series bolt-on and bolt-through

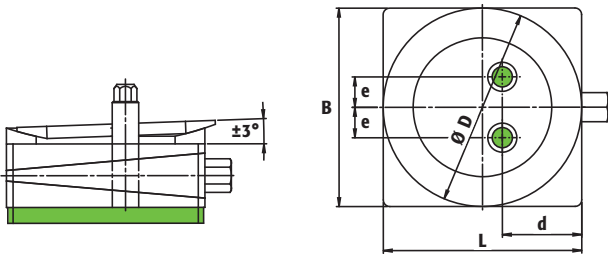
Bilz precision levelling wedges in aluminium design hard anodised (hard coating) are distinguished by their very high layer density, high degree of hardness – up to 600 HV and very good wear properties. The levelling wedge is easy to adjust and particularly suitable for EMC applications.

Bolts: Suitable bolts and nuts with standard thread and anchor for floor anchoring (only PKD-AL and PKDK-AL) can be supplied on request, see p. 37/38.

Colour: Natural colour dark grey

Note

- All sizes can be supplied with a stainless steel spherical seat.
- The specified maximum load is composed of static and dynamic loading of the machine.
- Mounting with Bilz insulation pads is also possible (also in EPDM for clean room applications).
- Please contact us if the size, insulation pad mounting or bolt size that you are looking for is not listed. In addition to our standard solutions and colours we also carry numerous special solutions. We are always happy to give advice.
- General tolerances in accordance with ISO 2768 mK.



PKA(K)-AL AND PKD(K)-AL

Machines for the food and luxury food industries, machines for the packaging, chemical and pharmaceutical industries. We also offer special solutions without lubricant and for higher loads for applications in clean rooms.



Type	Item no. PKA-AL	max. load N/pc.	L mm	B mm	H mm	Centre position	d mm	e mm	Internal thread mm	Adjustment range
PKA 1-AL	03-0060	19,000	115	115	44		50	24	M16	+3/-3
PKA 2-AL	03-0061	32,000	150	150	47		60	24	M18	+3/-5
PKA 3-AL	03-0062	57,000	200	200	53		80	27	M20	+4/-5
PKA 4-AL	03-0063	72,000	200	250	73		95	27	M20	+9/-5
	Item no. PKD-AL								Drill hole mm	
PKD 1-AL	04-0020	19,000	115	115	44		50	24	22	+3/-3
PKD 2-AL	04-0021	32,000	150	150	47		60	24	22	+3/-5
PKD 3-AL	04-0022	57,000	200	200	53		80	27	26	+4/-5
PKD 4-AL	04-0023	72,000	200	250	73		95	27	26	+9/-5

Type	Item no. PKAK-AL	max. load N/pc.	L mm	B mm	H mm	ØD mm	d mm	e mm	Internal thread mm	Adjustment range mm
PKAK 1-AL	05-0018	19,000	115	115	54	110	50	24	M16	+3/-3
PKAK 2-AL	05-0019	32,000	150	150	63	150	60	24	M18	+3/-5
PKAK 3-AL	05-0020	57,000	200	200	69	150	80	27	M20	+4/-5
PKAK 4-AL	05-0021	72,000	200	250	89	150	95	27	M20	+9/-5
	Item no. PKDK-AL								Drill hole mm	
PKDK 1-AL	06-0012	19,000	115	115	54	110	50	24	22	+3/-3
PKDK 2-AL	06-0013	32,000	150	150	63	150	60	24	22	+3/-5
PKDK 3-AL	06-0014	57,000	200	200	69	150	80	27	26	+4/-5
PKDK 4-AL	06-0015	72,000	200	250	89	150	95	27	26	+9/-5

Accessories



BOLTS FOR PRECISION LEVELLING WEDGE TYPE PKA

For PKA	Length in mm		
	100	125	150
M16	19-0323	19-0324	
M18	19-0325		
M20	19-0326		19-0327
M24			19-0329

Note

- **Galvanised** bolts; each supplied with 1x nut and 1x washer.
- Do you need a type of bolt that is not listed in the table? Please contact us.
We are happy to offer a wide selection of special bolts in terms of size, thread, material, quality, etc.
- All bolts are delivered with standard thread.
- The selection of the type of bolt has to be made depending on the static and dynamic loading in the particular application.
We would be happy to help you in the selection.

INSULATION WASHERS TO INSULATE THE BOLT HEAD

Our insulation washers for bolt heads offer adequate vibration and structure borne noise insulation in rigidly anchored machines and components.

They can be used at temperatures between -20 and +120 °C and are distinguished by their high resistance to oils, greases, acids and coolants used in industry.

Structure borne noise insulation in rigidly anchored machines and pipe suspensions.



for bolts Ø	Item no.	outer Ø mm	inner Ø mm	Installation height mm	max. preload force N	max. tightening torque Nm
to M12	20-0069	35	13	20	790	5
to M20	20-0071	50	21	22	1,500	16
to M30	20-0072	70	31	25	2,900	45

ANCHOR FOR FLOOR ANCHORING



Fischer heavy duty anchor SL
Fischer reaction anchor R and threaded rod RG
Fischer anchor bolt FAZ

Our supply range includes Fischer anchors.
Other types and manufacturers are available on request.

HORIZONTAL ELEMENTS

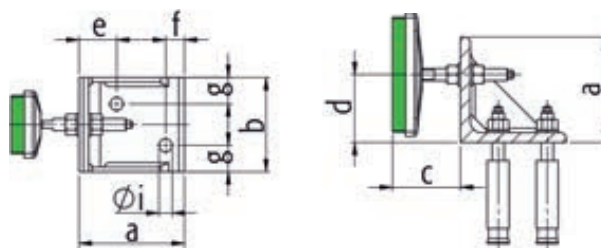


Size 1
Steel angle,
Levelling element
Type BNVS 115/5,
3 bolts
M16 x 150,
2 anchors M16

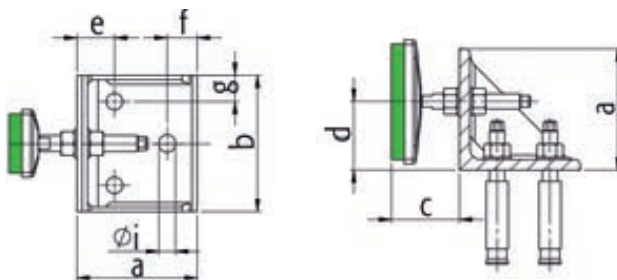
Size 2
Steel angle,
Levelling element
Type BNVS 115/5,
4 bolts
M20 x 150,
3 anchors M20

Type	Item no.	max. load N/pc.	a mm	b mm	c mm	d mm	e mm	f mm	g mm	i mm
Size 1	20-0066	16,500	140	125	45	60-115	50	25	35	17.5
Size 2	20-0067	16,500	160	180	55	60-140	48	43	37	22

Size 1



Size 2



EXTENSION FOR LEVELLING WEDGE BOLTS

**Extension for levelling wedge bolts**

We recommend the use of the levelling bolt extension for difficult to access levelling bolts. This facilitates the quick and easy levelling of the machine even where space is limited.

These levelling aids are available in different lengths and width across flats depending on the levelling wedge being used. Please contact us for further details.